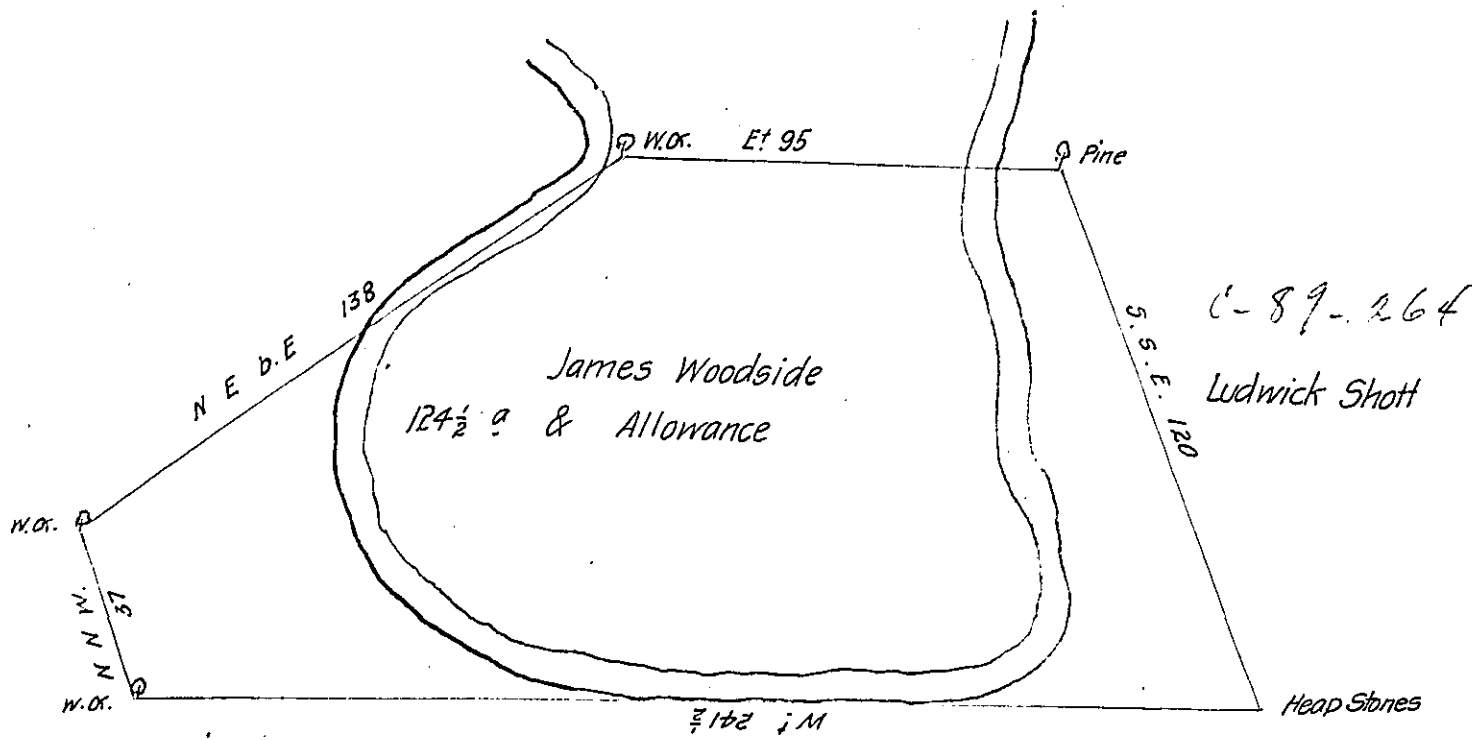


Vacant



Wiconesco Mountain

The Indian Encampment Survey'd for James Wood<sup>s</sup>ide on the 23<sup>d</sup> July 1767 Containing One Hundred Twenty four Acres & a Half & the Usual Allow<sup>ce</sup> of Six P. Ct. Situate in Wiconesco Valley Lancaster County By Application of the 15<sup>th</sup> day of June 1767. No. 2695

P-

Bartrem Galbraith D.S.

To

Jn<sup>o</sup> Lukens Esq<sup>r</sup>

S. Gen<sup>l</sup>

IN TESTIMONY that the above is a copy of the original remaining on file in the Department of Internal Affairs of Pennsylvania, made conformably to an Act of Assembly approved the 16th day of February, 1833, I have hereunto set my Hand and caused the Seal of said Department to be affixed at Harrisburg, this ninth day of November 1905

*[Signature]*  
Secretary of Internal Affairs.